



# IACUC Updates from the Office of Research

Christopher Keane, Vice President for Research

Phyllis Erdman, IACUC Chair

Nina Woodford, Attending Veterinarian, OCV

Mike Kluzik, Director, ORA



# Meeting Agenda

## 1. Presentation

- Introduction (C. Keane)
- Role of the IACUC (P. Erdman)
- Training & communication (P. Erdman)
- Policy updates (N. Woodford)
- Conclusion (C. Keane)

## 2. Question & answer period

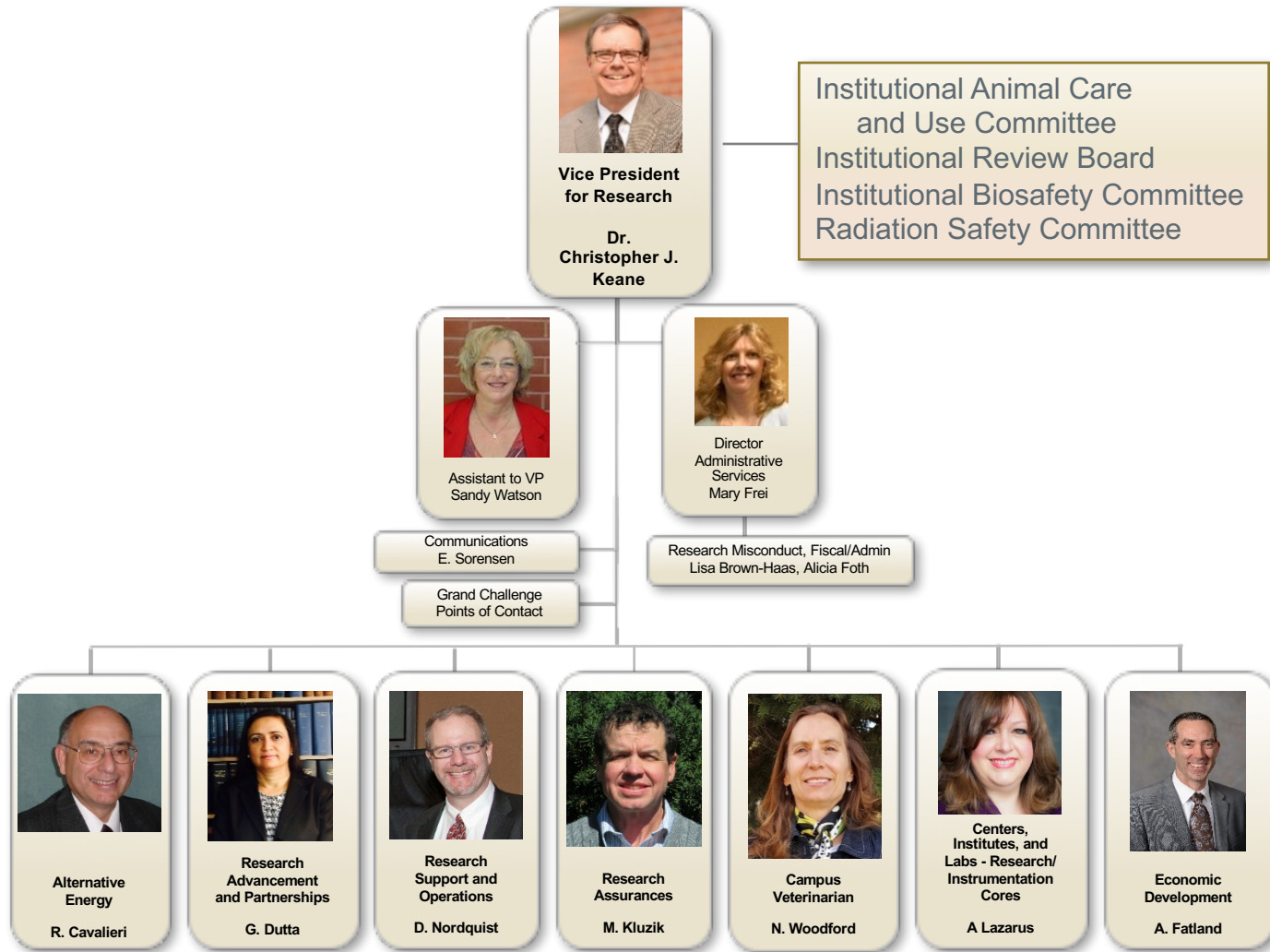


# Ethics and compliance are essential elements of a safe and successful research enterprise

<https://research.wsu.edu/>



# Office of Research Organization Chart









## WSU IACUC - Membership

Chair – Associate or full professor at WSU

Membership (minimum – no less than 5)

- One practicing scientist with experience in research involving animals
- One DVM – training/experience in lab animal medicine with appropriate university-wide authority (Office of Campus Veterinarian or designee)
- One member not affiliated with WSU
- One member with expertise in non-scientific area
- One faculty/staff/AP from WSU with experience in care & use of animals in instruction or research.

Note: no more than 3 members from same dept. at any given time



IACUC  
Chairperson

Community  
member (non-  
Affiliated)

Practicing  
Scientist

Ethics Expert,  
Non-Scientist

Voting  
Members &  
Alternates

Campus  
Veterinarian





## IACUC Responsibilities

- Responsible for the assessment and oversight of the animal care and use program
- Protocol reviews
- On-site facility inspections
- Program review includes
  - Training
  - Occupation safety
  - Policies and procedures
  - Resources
- Animal concerns & compliance



# ORA, OCV & IACUC provide support to the research community

1. Communication
2. Enhancements in service



# Communication

## Websites in revision

- IACUC
- OCV

## Training

- Mandated surgical training
- Refresher Training
  - Review of regulations and roles
  - Common compliance issues
  - Updates on new regulations and IACUC policies

## Post Approval Review



## Enhancements in Service

- Increase staffing at OCV & ORA
- Animal subjects approval form
- External review
- Reporting concerns about animals
- Policy revisions
  - WSU IACUC Policy #24
  - WSU IACUC Policy #27



## Reporting Concerns about Animals

- IACUC office: 509-335-7951 or [iacuc@wsu.edu](mailto:iacuc@wsu.edu)
- IACUC chair: 509-335-7951 or [perdman@wsu.edu](mailto:perdman@wsu.edu)
- OCV: 509-335-6246 or 509-330-1871 or [or.ocv.alert@wsu.edu](mailto:or.ocv.alert@wsu.edu)



## WSU IACUC Policy #24 in Revision Amendment Policy

3 methods for handling amendments

1. **Classic handling:** Full committee review (FCR) or designated member review (DMR) by IACUC
2. **Minor administrative changes** by the IACUC coordinator
3. **Veterinary verification and consultation (VVC)** by IACUC-designated veterinarian.



# WSU IACUC Policy #24 in Revision

## Veterinary verification and consultation

### IACUC- designated veterinarian

- Change in anesthesia, analgesia, sedation or experimental substances
- Change in euthanasia method if approved in the AVMA Guidelines for the Euthanasia of Animals
- Changes in the duration, frequency, type, or number of procedures performed (if procedure is already approved on the existing protocol)



## WSU IACUC Policy #24 in Revision Amendment Policy

### Advantages to Policy #24

- Permits researchers to immediately apply some significant changes
- Reduces the risk of compromising an ongoing research activity.
- Reduces regulatory burden





## WSU IACUC Policy #27: PROCEDURE FOR ADDRESSING NON-COMPLIANCE WITH IACUC POLICIES OR PROCEDURES

- **NOT NEW** - Recently revised
- Defines review process
- Provides examples of non-compliance
- Examples originate from OLAW and AWA regulations



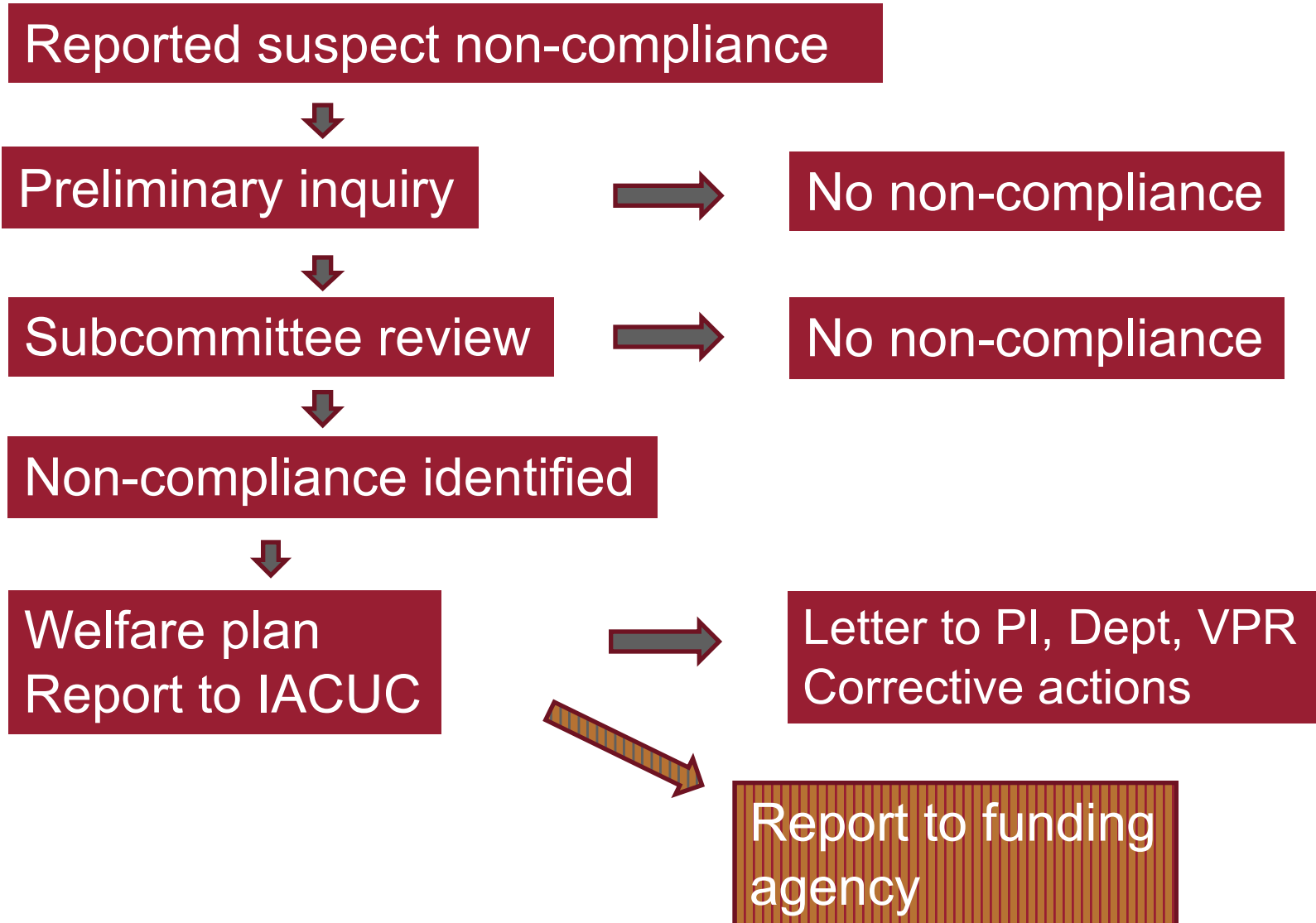
## Examples of Animal-Related Compliance Deviations

- Procedures conducted without IACUC approval
- Drugs administered without IACUC approval
- Procedures conducted by unapproved personnel without direct supervision
- Failure to maintain surgical or medical records
- Failure to monitor animals as necessary to insure well-being
- Failure to carry out veterinary orders
- Failure to correct deficiencies identified during a semiannual inspection in a timely manner
- Failure to report adverse events/unexpected outcomes to OCV and the IACUC

<http://grants.nih.gov/grants/guide/notice-files/NOT-OD-05-034.html>



# WSU IACUC Policy #27: Process





## Conclusion

# Compliance is a team effort

- PI
- Research personnel & students
- Animal care community
- ORA
- IACUC
- OCV
- Other: OR, IBC, IRB, ...

